

novacolor™
I colori dell'Architettura



marmorino^{ks}

Grassello di calce ad effetto satinato per interni ed esterni
Mineral plaster coat with a satin effect for interiors and exteriors



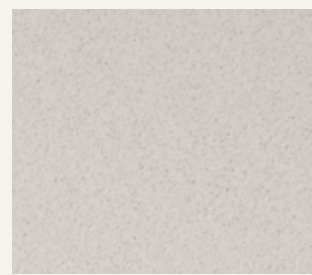
MKS 651*



MKS 639*



MKS 652*



MKS 650



MKS 638*



MKS 633



MKS 623*



MKS 621



MKS 630



MKS 622*



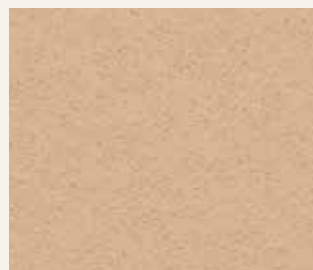
MKS 634



MKS 624

I colori contrassegnati con * non sono utilizzabili in esterni.
Colours marked with * may NOT be used outdoor.

Marmorino KS è a base calce: sono possibili leggere variazioni di colore tra la cartella e lotti diversi di produzione. Si consiglia sempre un unico lotto per ultimare il cantiere.
Marmorino KS contains lime therefore slight colour variations between colour card and different batch numbers may always occur. It is highly recommended not to use different batch numbers to finish up the same surface.



MKS 611



MKS 608



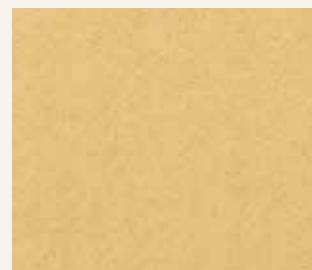
MKS 614*



MKS 637*



MKS 612*



MKS 601*



MKS 631*



MKS 603*



MKS 635*



MKS 632*

Marmorino KS

Grassello di calce ad effetto satinato per interni ed esterni

Applicare Marmorino KS in due strati con spatola inox, in funzione dell'effetto desiderato.

Resa: 0,8-1 Kg/m² in due strati.

Per maggiori informazioni consultare la scheda tecnica.

Mineral plaster coat with a satin effect for interiors and exteriors

Apply Marmorino KS in two layers with a stainless steel trowel, according to the desired effect.

Yield: 0,8-1 Kg/m² in two layers.

For more information please check the technical data sheet.

Enduit à la chaux à effet satiné pour intérieurs et extérieurs

Appliquer Marmorino KS en deux couches avec truelle inox, en fonction de l'effet désiré.

Rendement: 0,8-1 Kg/m² en deux couches.

Pour plus d'informations consulter la fiche technique.

Feine Spachtelmasse auf Kalkbasis zur Dekoration von Oberflächen im Innen- und Aussenbereich

In zwei Schichten mit Stahlspachtel auftragen und glätten.

Verbrauch: 0,8-1 Kg/m² in den zwei Schichten.

Für weitere Info bitte siehe technisches Merkblatt.



MKS 660*



MKS 648



MKS 657*



MKS 654



MKS 649



MKS 627



MKS 658



MKS 646

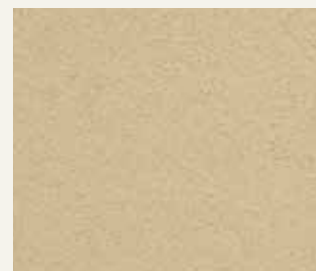


MKS 653



MKS 605

Le tonalità qui riprodotte, pur avvicinandosi a quelle di fornitura, sono indicative. Per una corretta lettura dei colori si raccomanda di consultare questa cartella alla luce solare.
The colour shades herein reproduced are purely indicative, as small variations may occur. For a correct reading of the colours it is recommended to examine the catalogue under direct sunlight.



MKS 643



MKS 644



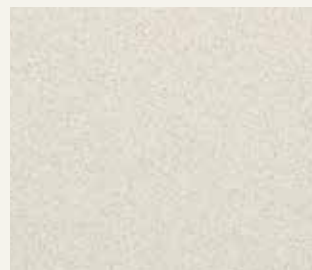
MKS 641



MKS 607



MKS 640*



MKS 642



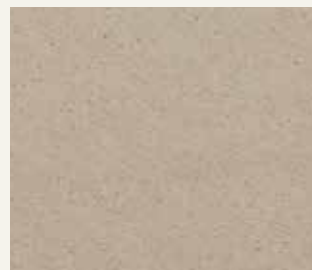
MKS 626



MKS 605*



MKS 628*



MKS 629



MKS 645*



MKS 661*



MKS 647*



MKS 625*



MKS 509 + CERA WAX NEUTRA



MKS 620*



MKS 659

Marmorino KS Colour trends



novacolor™

I colori dell'Architettura

NOVACOLOR srl - 47122 Forlì - Italia
Tel +39 0543 401840 - fax +39 0543 414585
Via U. Aldrovandi, 10 - info@novacolor.it



NOVACOLOR is committed to reduce the environmental impact by producing friendly materials.

Made in Italy



**AZIENDA CON SISTEMA
DI GESTIONE QUALITÀ
CERTIFICATO DA DNV GL
= ISO 9001 =**

**COMPANY WITH
QUALITY SYSTEM
CERTIFIED BY DNV GL
= ISO 9001 =**